

**HIGH BRIGHTNESS BUSINESS PROJECTORS  
EB-L12000QNL/L20000UNL**

**EPSON**  
EXCEED YOUR VISION

**BRIGHT, BRILLIANT & DETAILED.**

**EPSON**  
EXCEED YOUR VISION



Get ready to impress and do even more with the EB-L12000QNL and the EB-L20000UNL high brightness laser projectors. Deliver stunning images in native 4K resolution<sup>1</sup>, and revel in colour brightness of up to 20,000 lumens with Epson 3LCD technology. Enjoy ease of mobility and installation flexibility. And high reliability with a robust design protected by a triple layered dust-proof structure. Put together, businesses now have all it takes in Epson to make a powerful impact on a bigger stage.



**IT'S IN THE DETAILS.**

With 3LCD panels, every projection gives you spectacular true colours.

**POWERFUL PRECISION**

Colour brightness in outstanding levels of up to 20,000 lumens with spectacular image quality delivered in native 4K resolution<sup>1</sup> for best of both power and details.

**RELIABLE PERFORMANCE**

Robust design with triple layered dust-proof structure, plus 20,000 hours<sup>2</sup> maintenance free.<sup>3</sup>

**HIGHER INSTALLATION FLEXIBILITY**

Engineered for greater mobility and higher installation flexibility, supported by Epson Professional Tools and innovation.

Sales Enquiries  
800 120 5564

 EpsonSEA
  @EpsonSEA
  @EpsonSEA
  EpsonSoutheastAsia
  Epson Southeast Asia



Epson Singapore Pte Ltd 1 Harbourfront Place, #03-02 HarbourFront Tower One, Singapore 098633. Tel: (65) 6596-5500 Fax: (65) 6271-9755  
Epson Customer Care Centre 108 Pasir Panjang Road, #04-08 Golden Agri Plaza, Singapore 118535. Epson Helpdesk: 800 120 5564. Operating hours: Monday - Friday, 9am - 6pm, Saturday, 9am - 1pm. Closed on Sunday and Public Holiday.

\* All information are up to date as of September 2019.

<sup>1</sup> Native 4K resolution available only on Epson EB-L12000QNL.  
<sup>2</sup> 20,000H life for laser light source: Approximate time until brightness decreases 50% from first usage. Measured by acceleration test assuming use of 0.04 - 0.20 mg/m<sup>3</sup> of particulate matter. Time varies depending on usage conditions and environments. Replacement of parts other than the light source may be required in a shorter period.  
<sup>3</sup> No maintenance for the light source required up to 20,000H.



# Powerful & Compact

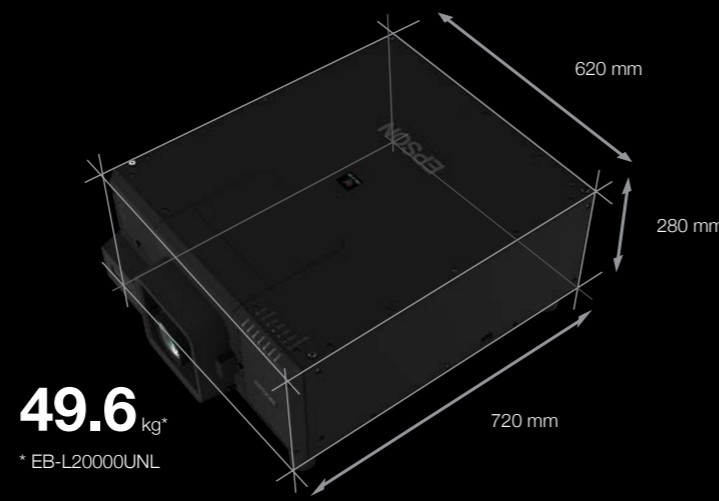
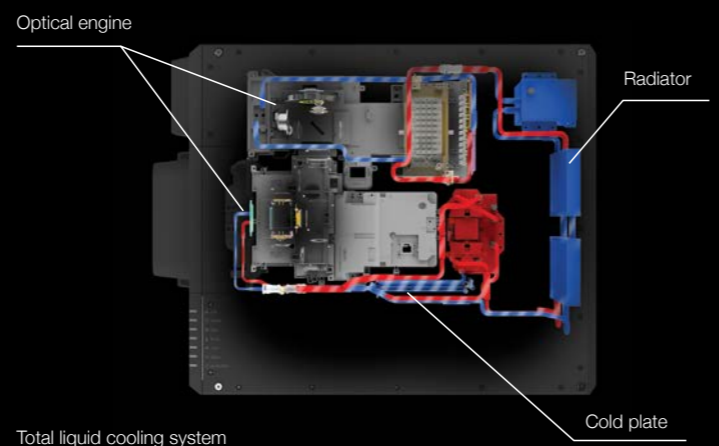
## Native 4K† Panel

One single chip, 1.03-inch native 4K panel delivers ultra-high definition image quality with a native resolution of 3840x2160. The panel with its 6 μm pixel-pitch is designed by Epson and manufactured to the highest standards in Epson Japanese factories.



## Total Liquid Cooling System

A newly developed liquid cooling system maintains optimal temperatures of key optical elements. The inorganic LCD panels, inorganic phosphor wheel and laser light source are kept at optimal temperature no matter how the projector is installed. This efficient cooling system contributes to minimising body size and noise.



## 20,000-Hour Maintenance Free

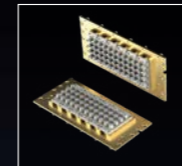
A newly designed laser light source and advanced electrostatic filter deliver 20,000 hours\* of maintenance-free for the laser light source only.

Inorganic LCD panels and an inorganic phosphor wheel combine with a dust-proof design for 20,000 hours of warranty†. Additionally, the laser light source is highly reliable, eliminating the worry of the light burning out during important presentations.

Inorganic LCD panels



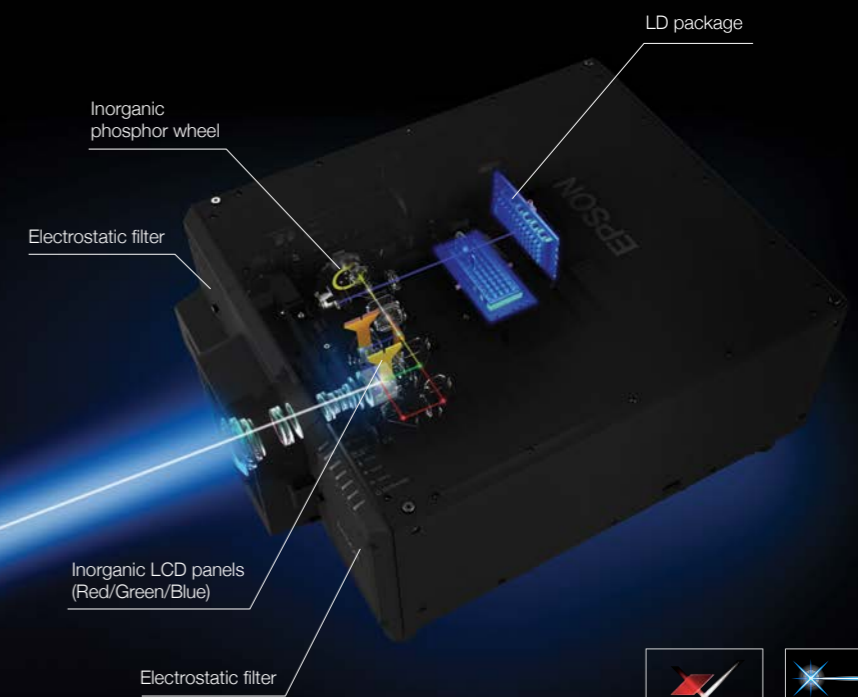
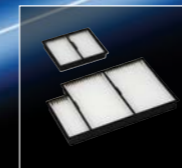
LD (laser diode) package



Inorganic phosphor wheel



Electrostatic filters



† Only for EB-L12000QNL.

\* 20,000H life for laser light source : Approximate time until brightness decreases 50% from first usage. Measured by acceleration test assuming use of 0.04 - 0.20 mg/m³ of particulate matter. Time varies depending on usage conditions and environments. Replacement of parts other than the light source may be required in a shorter period.  
† Three years or 20,000 hours, whichever comes first.



# Powerful & Compact

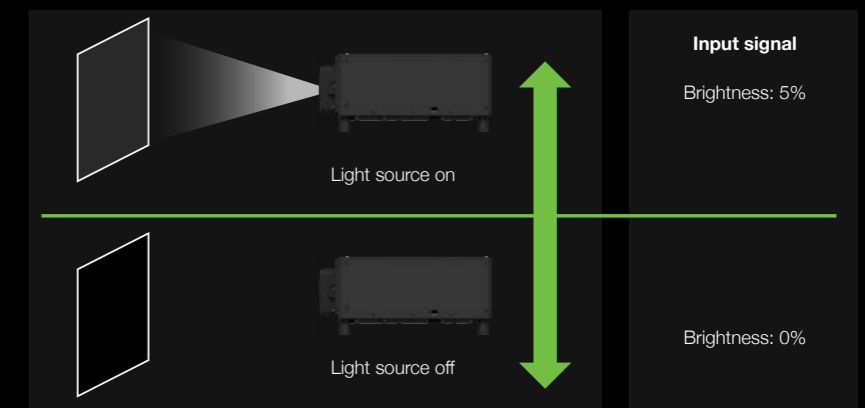
## High Contrast Ratio

Add brilliance to your presentations. Boasting stunning brightness of up to 20,000 lumens and a high contrast ratio of 2,500,000:1, these projectors enable you to project beautiful, well-defined images wherever you are, regardless of ambient light.



## Light-Out Control

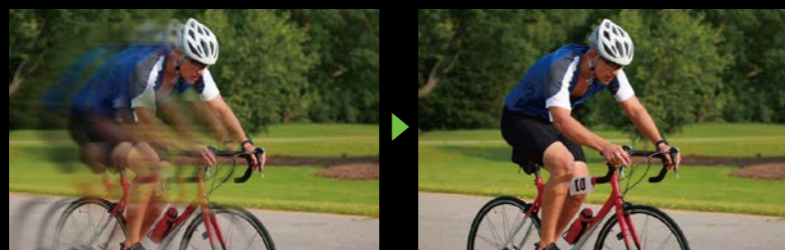
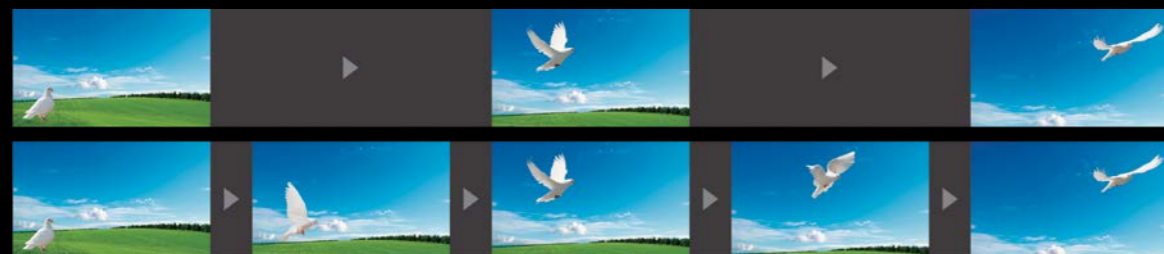
You can control the laser light source, turning it on or off based on the black level value of the video signal.



## Frame Interpolation\*

By analysing frame-by-frame then generating intermediate frames for 100Hz/120Hz frame rate, EB-L20000UNL delivers smooth video with less after images, even when projecting sports and other fast-moving content.

\* Only for EB-L20000UNL.



\* Simulated images

## High Dynamic Range

EB-L12000QNL/L20000UNL supports HDR10 and Hybrid Log Gamma for dynamic output over a broad tonal range with a minimum of white or black spotting.



SDR (standard dynamic range)



HDR (high dynamic range)

\* Simulated images

## Image Enhancement

Epson's unique high-quality image signal processing maintains edge crisp and highly detailed edges.



Without image enhancement technology



With image enhancement technology

\* Simulated images

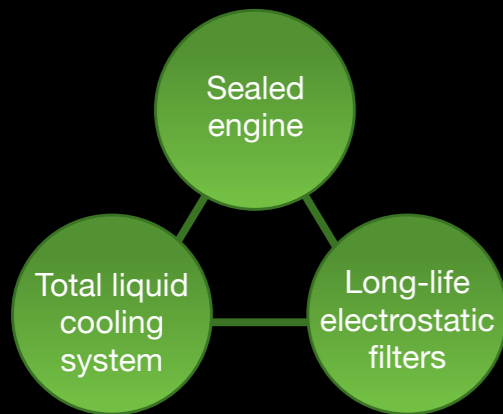


# Reliable Performance



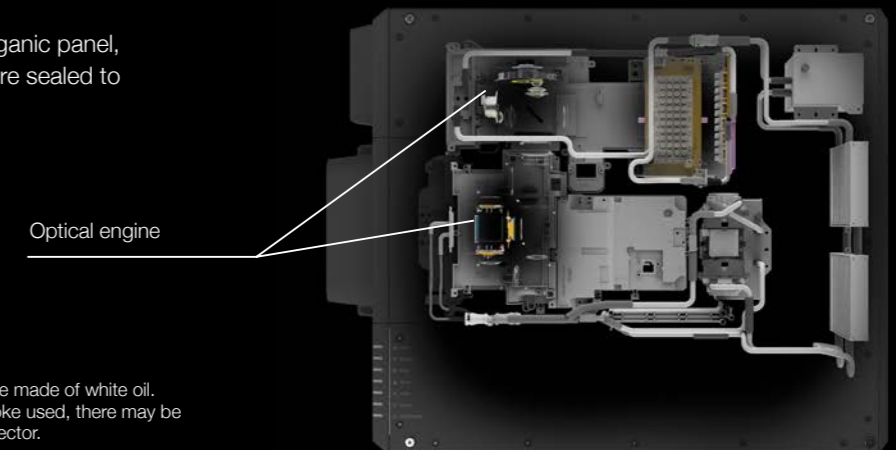
## Triple-Layer Dustproof Structure

EB-L12000QNL/L20000UNL has three layers of protection for excellent durability and dust-resistance. The light source and optical elements are both sealed, and the newly developed total liquid cooling system splits airflow while reducing incoming air to the optical engine by 86%\* compared to conventional models<sup>†</sup>. In addition, replaceable 20,000-hour<sup>‡</sup>, maintenance-free electrostatic filters cut dust intake to miniscule levels.



## Sealed Optical Engine

Key optical components, including the inorganic panel, inorganic phosphor wheel and laser bank are sealed to prevent contamination by dust or smoke\*.



\* Measured by acceleration test assuming use of smoke made of white oil. Depending on the usage conditions and types of smoke used, there may be a case to clean up or replace components of the projector.

## Long-Life, Replaceable Electrostatic Filters

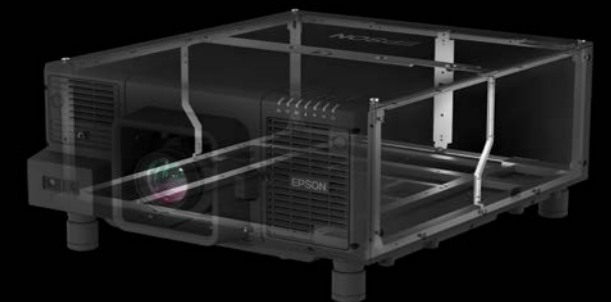
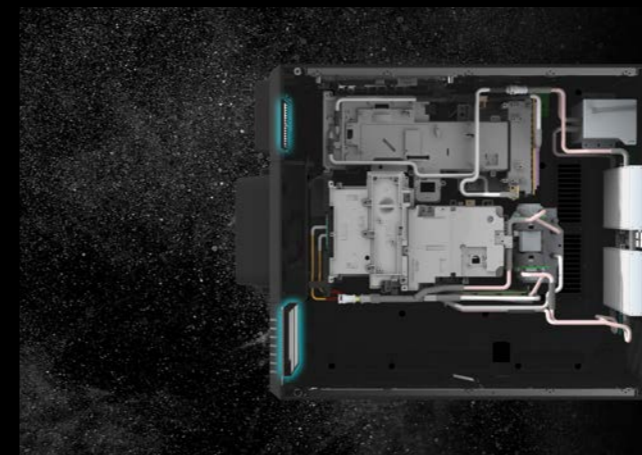
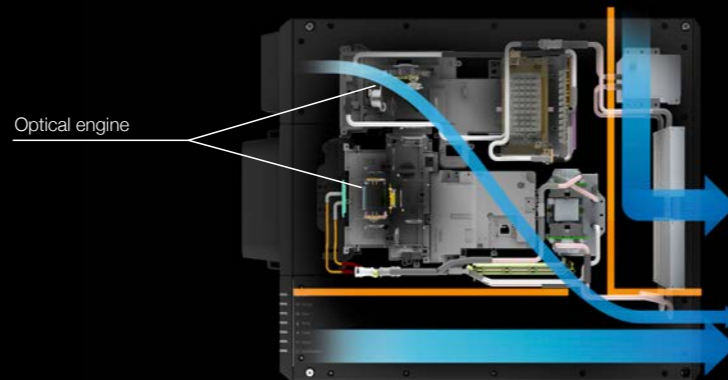
Electrostatic filters give you 20,000 hours\* of maintenance-free use and vastly reduce incoming dust impairing optical components.

## Robust Body

The adoption of a pipe frame and baseplate structure has greatly improved the durability of the casing. By redesign the internal structure, we achieved the compact and lightweight design for easy installation.

## 86% Reduced Airflow And Sealed Engine

The total cooling system takes in air independently for both the radiator and power supply. This reduces airflow to the optical engine by 86%\* compared to conventional models. With lesser airflow, there is lesser chance of dust penetration into the machine.



\* Compared with EB-L25000U. Measured by acceleration test assuming use of 0.04 - 0.20 mg/m<sup>3</sup> of particulate matter. Results may vary depending on usage conditions.

<sup>†</sup> 20,000H life for laser light source : Approximate time until brightness decreases 50% from first usage. Measured by acceleration test assuming use of 0.04 - 0.20 mg/m<sup>3</sup> of particulate matter. Time varies depending on usage conditions and environments. Replacement of parts other than the light source may be required in a shorter period.

<sup>‡</sup> 20,000H life for laser light source : Approximate time until brightness decreases 50% from first usage. Measured by acceleration test assuming use of 0.04 - 0.20 mg/m<sup>3</sup> of particulate matter. Time varies depending on usage conditions and environments. Replacement of parts other than the light source may be required in a shorter period.



# Reliable Performance



## Status Monitor

Quickly check the signal, voltage and network information via the monitor.



## Power Supply Log

Monitor and log times with drops in voltage. The ability to log up to 30 voltage drops can help determine the cause of unexpected shutdowns.

## Settings On Standby

Configure IP settings and reset default values without powering up.

## Mechanical Shutter

The mechanical shutter inside the unit is protected against damage from laser lights that are sometimes part of lightshows.

## Zero Offset, Ultra Short-Throw Lens

This lens is especially useful for environments with extremely limited lens-to-screen distances. Ultra Short Throw Ratio of 0.35 and the zero-offset, bending optical system enables projection onto 100" projection at 74cm away. These features combine with lens shift\* to simplify operation and expand usability.

\* With EB-L12000QNL, Horizontal: -10% to +10% / Vertical: +45% to +68%

\* With EB-L20000UNL, Horizontal: -15% to +15% / Vertical: +45% to +70%

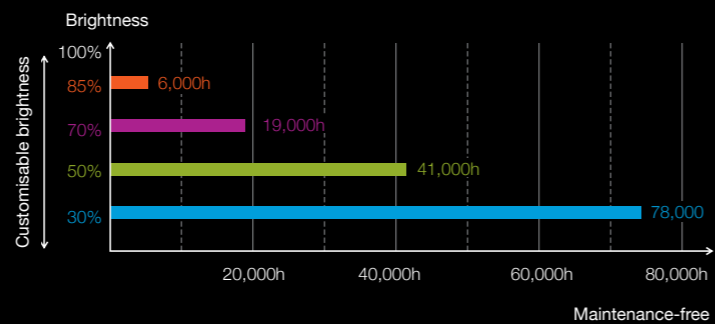
## Wider Lens Shift Range

The extremely wide-ranging lens shift was realised through a change in design and careful consideration of the lens and optical engine combination. Furthermore, the adoption of an improved stepping motor for the range shift mechanism allows for more precise adjustment.

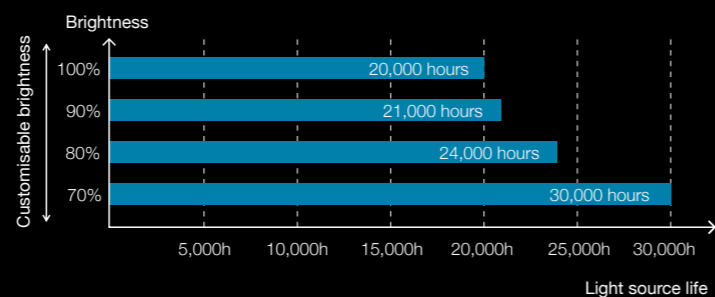
## Constant Brightness

Maintaining a specific brightness over a prolonged period of time, depending on the application, offers increased flexibility. Venues such as an art museum can take advantage of this feature in situations where constant brightness is a must.

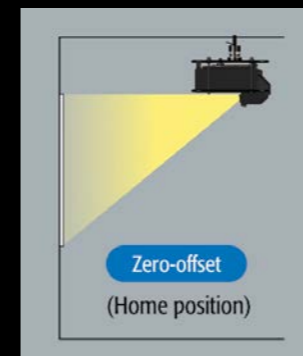
Custom mode with constant brightness



Custom brightness

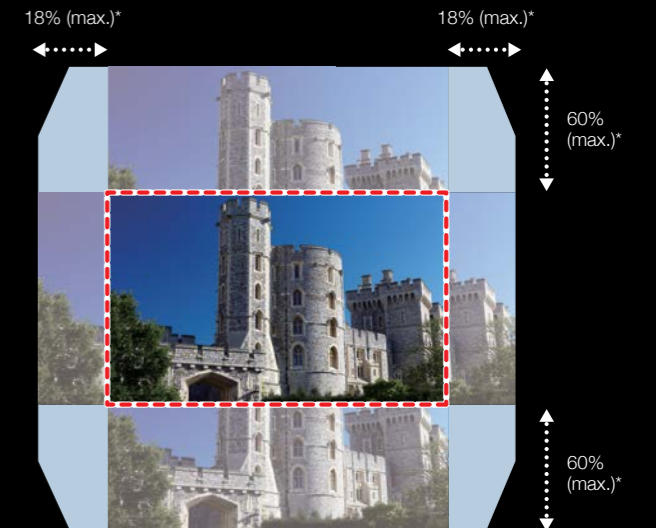


\* Approximate time until brightness decreases 50% from first usage. Time varies depending on usage conditions and environments.



Larger image from shorter distances, plus added installation flexibility

Lens shift range



\* When using the ELPLM15 lens

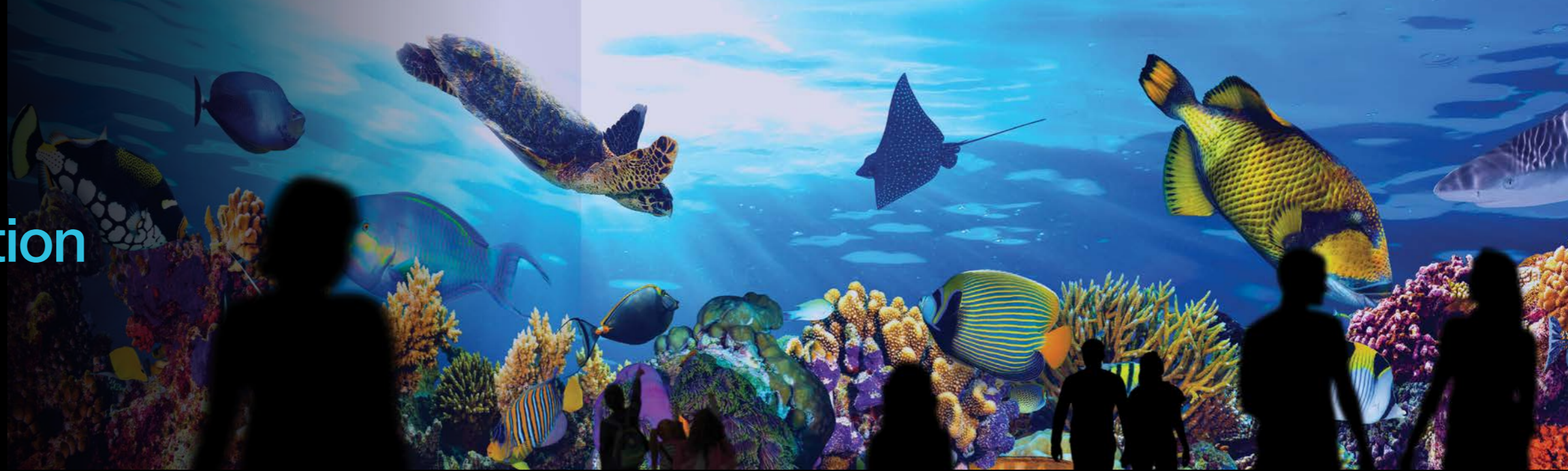
\* 58% (max.) vertically; 16% (max.) horizontally for EB-L12000QNL

## Powered Lens Lens Position Memory

Up to 10 settings can be stored in the projector memory, including shift positions, focus adjustments and projection sizes.

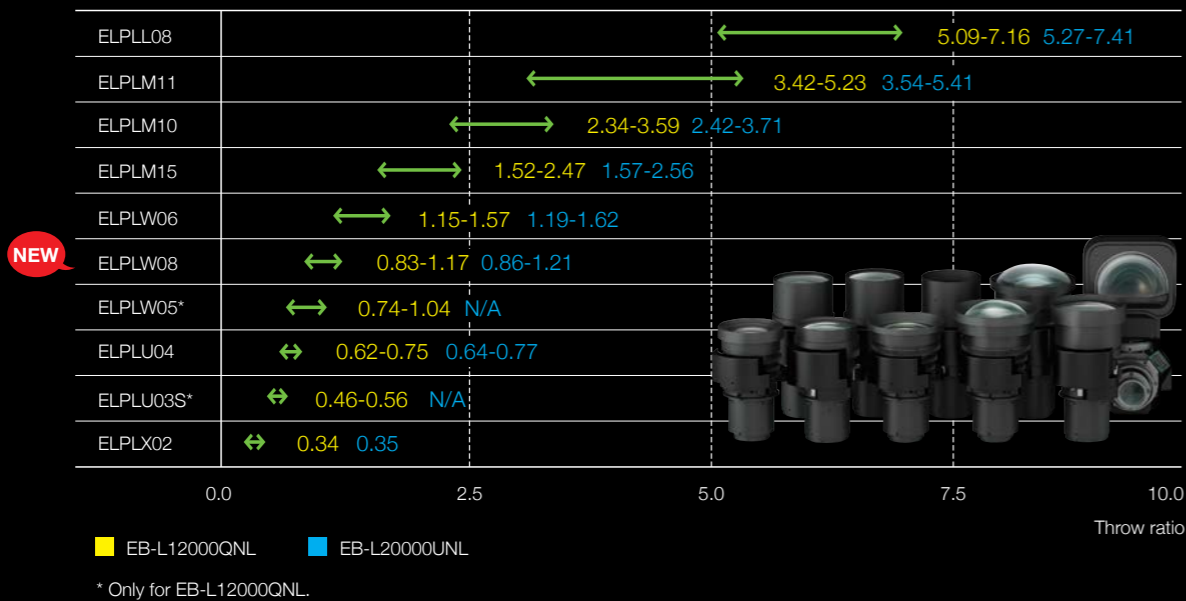


# Higher Installation Flexibility



## Wide-Range Of Optical Lenses

An extensive line up of optional lenses is available for any venue or subject.



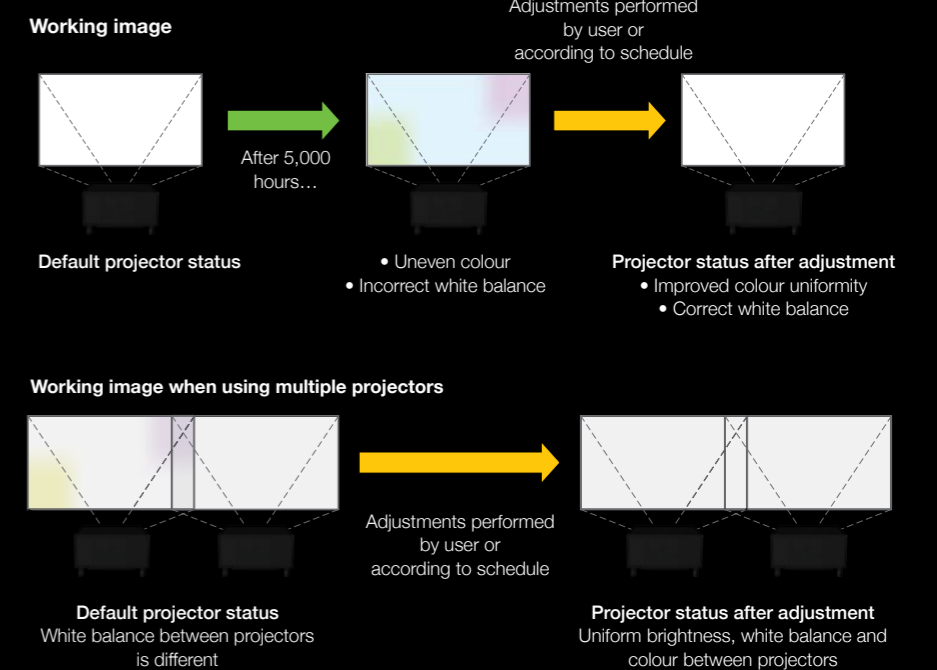
## Auto Geometry Correction with Built-In Camera

The built-in camera detects images that are not projected correctly, allowing the projector to automatically correct a variety of geometry corrections like corner and curved projections.



## Auto-Colour Adjustment

The built-in camera detects subtle colour inconsistencies between multiple projectors. It detects screens that have become unevenly coloured over time, allowing the projector to automatically correct colour. This function can be set to check colour manually or automatically at regular intervals to deliver stable image quality with minimal maintenance.



## Multiple Interfaces

The LAN terminal is a robust, lockable etherCON connector for firm connections even after repeated use. Also, EB-L12000QNL supports 12G SDI\* to project 4K images using one cable and outputting a 12G signal from the output terminal. The optional ELPIF03 interface board has a DisplayPort connector that supports 4K – 120 Hz signals.



\* Only SDI terminal 1

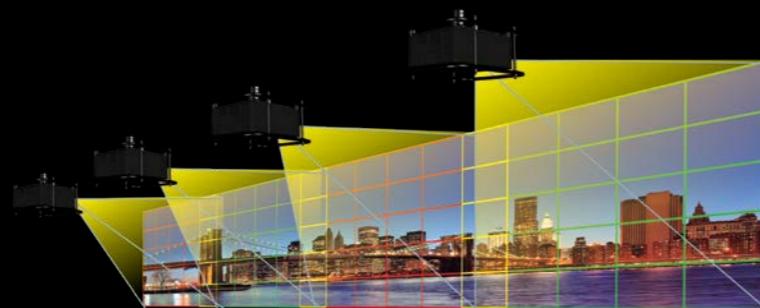
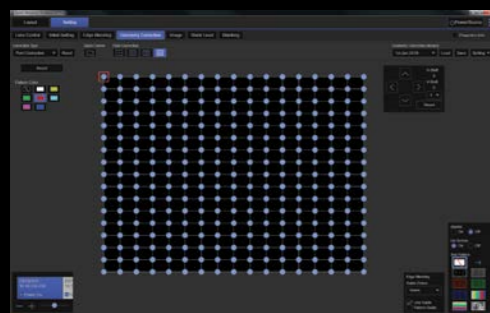


# Higher Installation Flexibility



## Epson Projector Professional Tool

The projectors are bundled with Epson Projector Professional Tool software that simplifies setup of multi-projector installations, offering intuitive geometry correction such as edge-blending and corrections for curved surfaces. The software also lets you control colour-matching and brightness.



## Tiling Assist

The built-in camera automatically compensates for overlapping areas and corner positions to deliver seamless multi-projector displays, making big-screen projections a snap.



## Interface Slot For Expansion

Interface slots allow for a variety of custom hardware according to your usage. Additionally, it allows for new interfaces and interface updates in the future.



ELPIF01: HDMI/DVI  
ELPIF02: SDI\*  
ELPIF03: Display port  
\* Only for EB-L12000QNL

## Web Control With Multi-Device Support

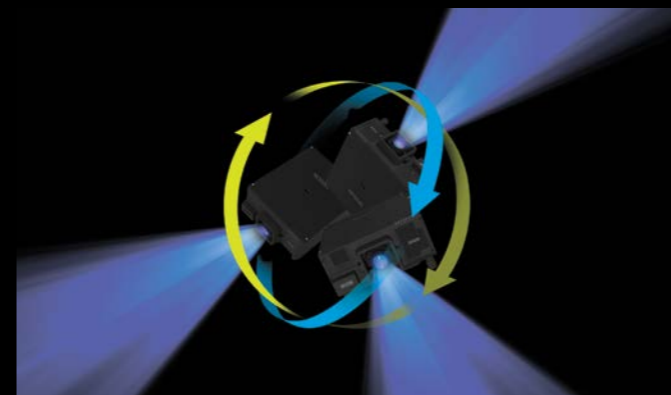
Use a computer web browser or smart devices to adjust projector settings. The newly designed OSD Control Pad function allows control of the OSD menu and even shows a representation of the lens-condition on a smart device.

## Epson Projector Management

Using Epson Projector Management allows you to monitor and control multiple network connected projectors (up to 2,000 units) using a computer with easy to use GUI. A projector's power status, irregularities, warnings, etc. can all be determined visually through the use of icons or you can choose to be notified by email of any projector anomalies.

## Multi-Directional Projection

EB-L12000QNL/L20000UNL can be rotated 360° in any direction — horizontally, vertically and rotationally — without any loss in image brightness.



## Screw Holes For Eyebolts

Screw holes are provided on both the top and bottom. Strong threads make it safe and easy to transport the projector via crane.





# Higher Installation Flexibility



## Wide Range of Connectivity

EB-L12000QNL/L20000UNL is compatible with a wide range of external devices, and additional ports now include DVI-D, HDMI, HDBaseT and SDI\*. Ideal for large venues, HDBaseT can transmit Full HD video, audio and Ethernet at low cost through cat 5e/6 cables up to 100 metres.

\* EB-L12000QNL's SDI port will be found in ELPIF02.

## DMX-ArtNet

EB-L12000QNL/L20000UNL supports DMX-ArtNet for synchronising lighting effects (such as pre-programmed sequences) with audio.



EB-L20000UNL

## Eco Features

- Uses just 0.5W of power in standby mode
- Projector optics employ lead-free lenses
- Unpainted plastic housing reduces the environment impact
- The flame retardants used in the plastic housing do not contain chlorine or bromine

## Better Products for a Better Future™

For more information on Epson's environmental programmes, visit <http://global.epson.com/SR/environment>.

## PARTNERS IN PERFECTION

### HDBaseT Transmitter ELPHD01



HDMI Input  
RS232C for control  
LAN for Ethernet  
Allows Full HD uncompressed signal transmission up to 100 meters

### ELPLX02



Ultra Short Throw Lens  
Throw Ratio: 0.35  
Screen Size of up to 1000" Diagonal  
Vertical & Horizontal Lens Shift

### Interface Board ELPIF03



2x Display Port  
HDCP 2.2  
Uncompressed signal transmission beyond Full HD Resolution

## LENS SPECIFICATIONS EB-L12000QNL/L20000UNL



Product Image	Ultra Short Throw Lens (ELPLX02)	Zoom Lens (ELPLU03S) <sup>^</sup>	Zoom Lens (ELPLU04)	Zoom Lens (ELPLW05) <sup>^</sup>	Zoom Lens (ELPLW06)
<b>Model</b>	Ultra Short Throw Lens (ELPLX02)	Zoom Lens (ELPLU03S) <sup>^</sup>	Zoom Lens (ELPLU04)	Zoom Lens (ELPLW05) <sup>^</sup>	Zoom Lens (ELPLW06)
<b>Product Code</b>	V12H004X02	V12H004UA3	V12H004U04	V12H004W05	V12H004W06
<b>Specification of Main Parts</b>					
<b>Projection Lens</b>					
Type	Powered : Focus / Distortion		Powered : Zoom / Focus / Distortion		Powered : Zoom / Focus
F-Number	1.9	2.0 - 2.3	2.0 - 2.1	2.0 - 2.2	1.8 - 2.3
Focal Length	8.0mm	11.1 - 13.1 mm	14.8 - 17.7 mm	17.6 - 24.3 mm	27.3 - 37.0 mm
Zoom Ratio	N/A	1 - 1.2		1 - 1.4	
Dimension (Diameter of Zoom Ring x Length)	380 x 340 x 210 mm	150 x 240 mm	150 x 267 mm	135 x 200.5 mm	129.8 x 236 mm
Weight	5000g	1800g	3100g	1450g	2950g
Position Sensor	Yes				
Lens ID	Yes				
Connector	24Pin				
Lens Exchange Correspondence	Yes				
<b>Screen Size (Projected Distance)</b>	100" - 1000" [0.73 - 7.64 m] Throw ratio 0.34	80" - 1000" [0.80 - 10.38 m] (Zoom: Wide) 80" - 1000" [0.97 - 12.48 m] (Zoom: Tele) Throw ratio 0.46 - 0.56	60" - 1000" [0.79 - 14.00 m] (Zoom: Wide) 60" - 1000" [0.96 - 16.87 m] (Zoom: Tele) Throw ratio 0.62 - 0.75	60" - 1000" [0.94 - 16.85 m] (Zoom: Wide) 60" to 500" [1.34 - 23.29 m] (Zoom: Tele) Throw ratio 0.74 - 1.04	60" to 1000" [1.48 - 5.90 m] (Zoom: Wide) 60" to 1000" [2.05 - 35.20 m] (Zoom: Tele) Throw ratio 1.15 - 1.57
<b>Lens Shift Range</b>	Powered Vertical: +45% to +68% (H Center) Horizontal: ±10% (V Center)	Powered Vertical: ±18% (H Center) Horizontal: ±6% (V Center)	Powered Vertical: ±58% (H Center) Horizontal: ±16% (V Center)	Powered Vertical: ±18% (H Center) Horizontal: ±6% (V Center)	Powered Vertical: ±58% (H Center) Horizontal: ±16% (V Center)
<b>Operating Temperature</b>	0 - 50°C		0 - 50°C		0 - 45 °C
<b>Storage Temperature</b>	-10 - 60 °C				
<b>Operating Angle of Tilt</b>	360°				
<b>Light Output (Brightness) *</b>					
H832	10,700lm	10,200lm	10,800lm	10,400lm	11,700lm

\* Reference value: Colour Mode - Dynamic, Zoom - Wide, Lens Shift - V/H Center

<sup>^</sup> Applicable for EB-L12000QNL only.

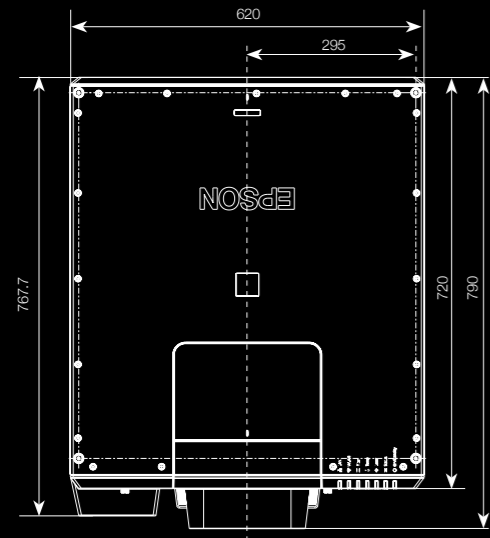


Product Image	Zoom Lens (ELPLW08)	Zoom Lens (ELPLM15)	Zoom Lens (ELPLM10)	Zoom Lens (ELPLM11)	Zoom Lens (ELPLL08)
<b>Model</b>	Zoom Lens (ELPLW08)	Zoom Lens (ELPLM15)	Zoom Lens (ELPLM10)	Zoom Lens (ELPLM11)	Zoom Lens (ELPLL08)
<b>Product Code</b>	V12H004W08	V12H004M0F	V12H004M0A	V12H004M0B	V12H004L08
<b>Specification of Main Parts</b>					
<b>Projection Lens</b>					
Type	Powered : Zoom / Focus		Powered : Zoom / Focus		Powered : Zoom / Focus
F-Number	2.0 - 2.3	1.8 - 2.35	1.8 - 2.4		1.8 - 2.5
Focal Length	19.71 - 27.48 mm	36.0 - 57.4 mm	55.4 - 83.3 mm	80.6 - 121.1 mm	119.0 - 165.4 mm
Zoom Ratio	1 - 1.4	1 - 1.6	1 - 1.5		1 - 1.4
Dimension (Diameter of Zoom Ring x Length)	139.5 x 248 mm	111.2 x 202 mm	104 x 243 mm	104 x 245 mm	104 x 247 mm
Weight(g)	3100g	1900g	2200g		
Position Sensor	Yes				
Lens ID	Yes				
Connector	24Pin				
Lens Exchange Correspondence	Yes				
<b>Screen Size (Projected Distance)</b>	60" - 1000" [1.08 - 18.65m] (Zoom: Wide) 60" - 1000" [1.53 - 26.23 m] (Zoom: Tele) Throw ratio 0.83 - 1.17	60" - 1000" [1.98 - 34.19 m] (Zoom: Wide) 60" - 1000" [3.24 - 55.28 m] (Zoom: Tele) Throw ratio 1.52 - 2.47	60" - 1000" [3.04 - 52.77 m] (Zoom: Wide) 60" - 1000" [4.70 - 80.35 m] (Zoom: Tele) Throw ratio 2.34 - 3.59	60" - 1000" [4.41 - 77.32 m] (Zoom: Wide) 60" - 1000" [6.82 - 117.30 m] (Zoom: Tele) Throw ratio 3.42 - 5.23	60" - 1000" [6.59 - 114.91 m] (Zoom: Wide) 60" - 1000" [9.34 - 160.70m] (Zoom: Tele) Throw ratio 5.09 - 7.16
<b>Lens Shift Range</b>	Powered Vertical: ±58% (H Center) Horizontal: ±16% (V Center)				
<b>Storage Temperature</b>	-10 - 60 °C				
<b>Operating Angle of Tilt</b>	360°				
<b>Light Output (Brightness) *</b>					
H832	11,500lm	12,000lm	11,400lm		11,200lm

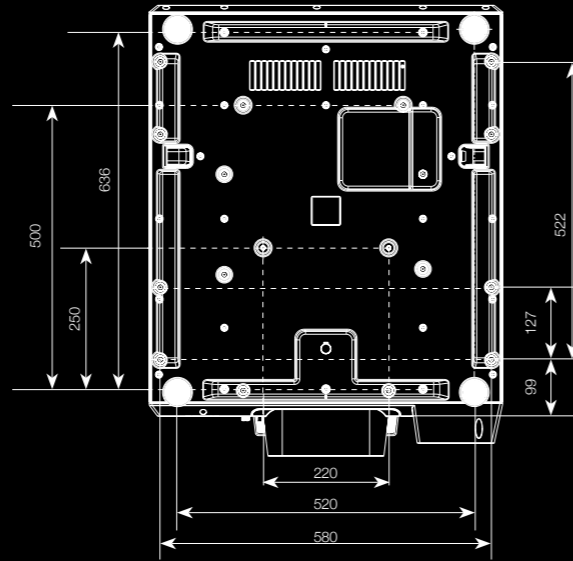
\* Reference value: Colour Mode - Dynamic, Zoom - Wide, Lens Shift - V/H Center



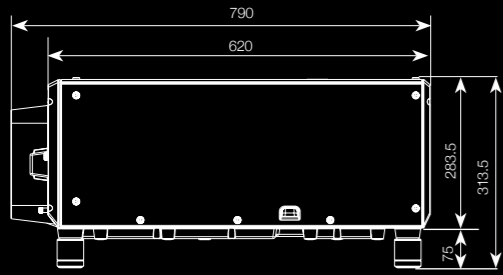
Top View



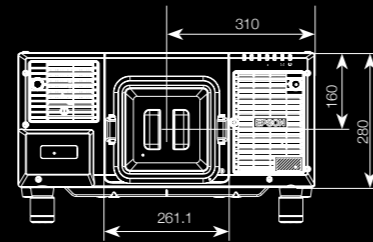
Bottom View



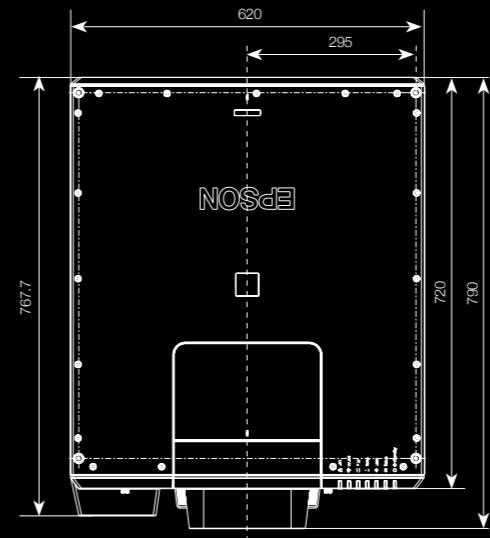
Side View



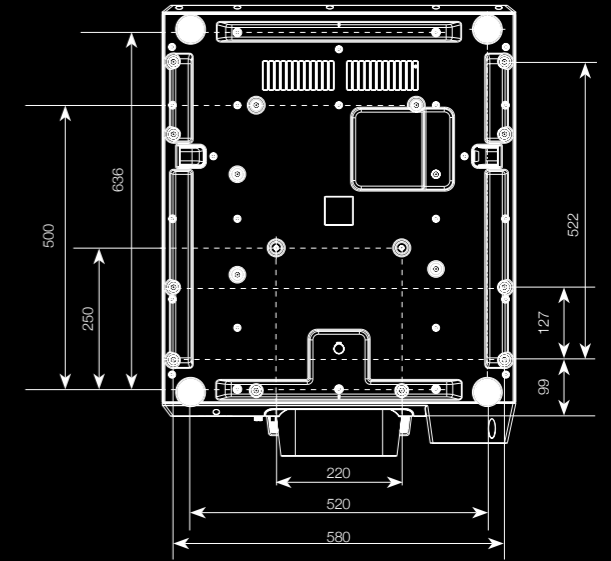
Front View



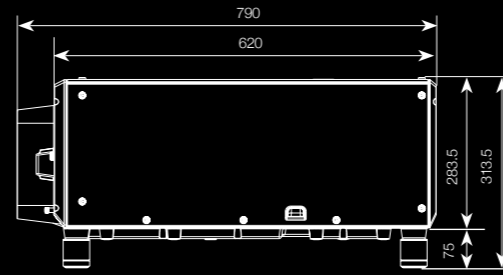
Top View



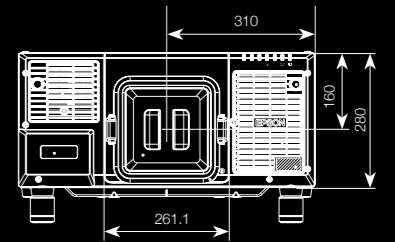
Bottom View



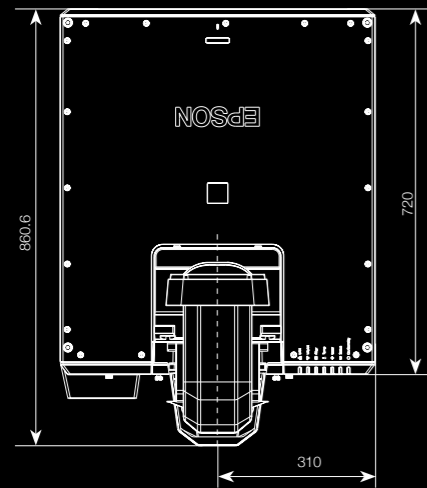
Side View



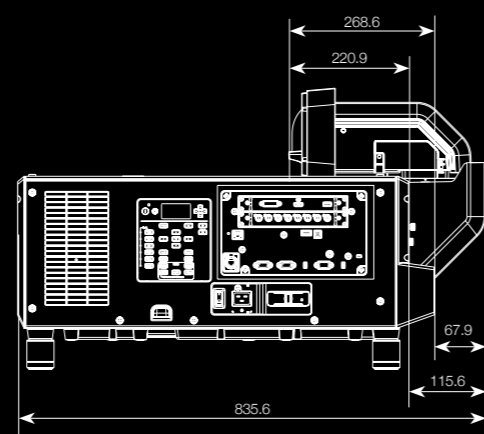
Front View



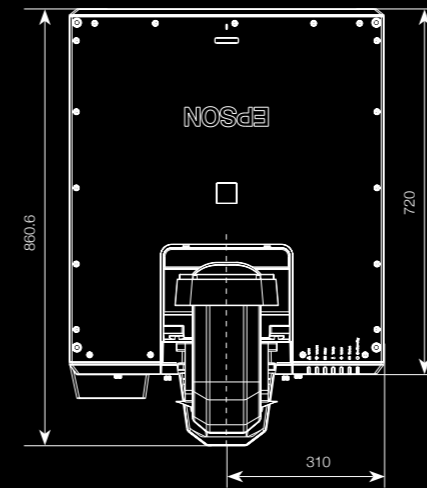
Top View (With ELPX02 lens)



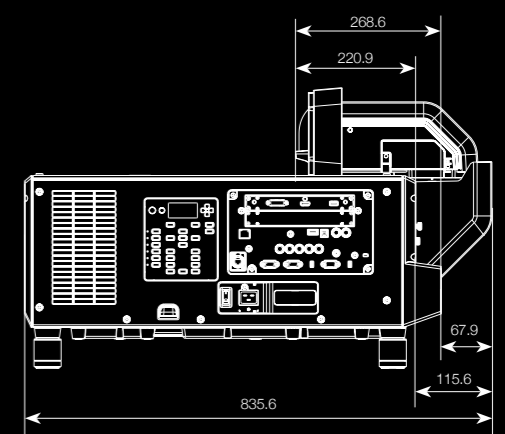
Side View (With ELPX02 lens)



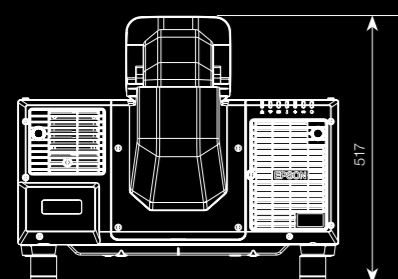
Top View (With ELPX02 lens)



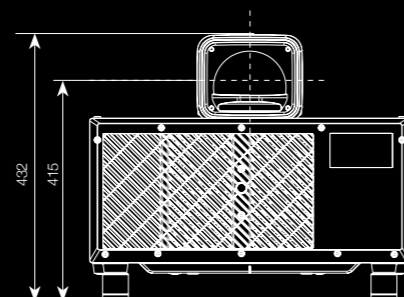
Side View (With ELPX02 lens)



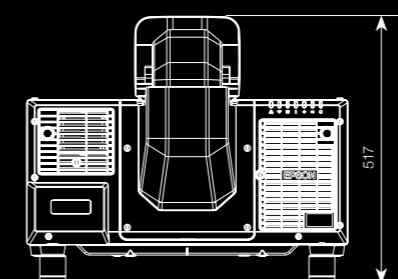
Front View (With ELPX02 lens)



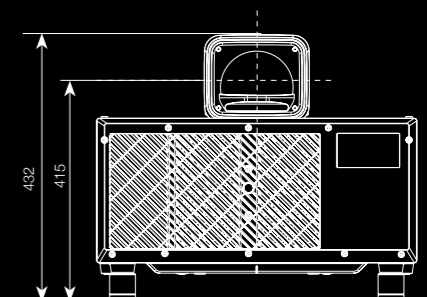
Back View (With ELPX02 lens)



Front View (With ELPX02 lens)



Back View (With ELPX02 lens)





**SPECIFICATIONS**  
**EB-L12000QNL/L20000UNL**

MODEL NUMBER	EB-L12000QNL	EB-L20000UNL	
SKU Number	V11H832852 / V11H832855	V11H833852 / V11H833855	
Projection Technology	RGB liquid crystal shutter projection system		
<b>Specifications of Main Parts</b>			
LCD	Size	1.04" (D11)	
	Native Resolution	4K (3840 x 2160) 4K (3844 x 2164) *Margin pixels included	
<b>Projection Lens</b>	Type	Power Zoom, Power Focus	
	F-Number	1.8 - 2.3	
	Focal Length	36.0 - 57.3 mm	
	Zoom Ratio	1 - 1.61	
	Throw Ratio	1.52 - 2.47	
	Lens Exchange	Yes	
	Lens Shift	Mode	Powered
		Vertical (Up/Down)	±58 %
		Horizontal (Left/Right)	±16 %
		Type	Laser Diode
Light Source	Life (Normal/Eco)	20,000 / 30,000 hours	
<b>Screen Size (Projected Distance)</b>			
Zoom: Wide	60" - 1000" [1.98 - 34.19 m]	60" - 1000" [1.99 - 34.43 m]	
Zoom: Tele	60" - 1000" [3.24 - 55.28 m]	60" - 1000" [3.26 - 55.63 m]	
<b>Brightness</b> <sup>1</sup>			
White Light Output (Normal/Eco)	12,000 / 8,400 lm	20,000 / 14,000 lm	
Colour Light Output	12,000 lm	20,000 lm	
<b>Contrast Ratio</b>			
Over 2,500,000:1			
<b>Geometric Correction</b>			
Vertical/Horizontal Keystone	±45° / ±30°	±44° / ±30°	
Quick Corner	Yes		
Curve Surface	Yes		
Point Correction	Yes		
Corner Wall	Yes		
<b>Connectivity</b>			
Analog Input	Mini D-Sub 15Pin	1	
	BNC	N/A	
Digital Input	HDBaseT	1 (RJ45)	
	SDI	N/A	
Expansion Interface Slot	Quantity	2	
	Factory Set	Slot 1: ELPIF01 (HDMI & DVI-D) Slot 2: ELPIF02 (SDI)	
Expansion Interface Board	ELPIF01	HDMI 1 (HDMI 19p)	
	DVI-D	1	
ELPIF02	DC Out	1 (500mA)	
	SDI In	4 (SD-SDI, HD-SDI, 3G-SDI, 12G-SDI)	
ELPIF03	SDI Out	4 (SD-SDI, HD-SDI, 3G-SDI, 12G-SDI)	
	DisplayPort In	2	
Analog Output	Mini D-Sub 15Pin	1	
	BNC	N/A	
Others	USB Type A	1 (for Firmware Update, Copy OSD Settings, DC Out 900mA)	
	USB Type B	1 (for Firmware Update, Copy OSD Settings)	
Control I/O	RS-232C	1	
	Remote Control Input	1 (Stereo Mini)	
Network	Wired LAN	RJ45 x1 (etherCON)	
	Wireless	1	
<b>Wireless Specification</b>			
Supported Speed for Each Mode	IEEE 802.11b (2.4GHz): 11 Mbps <sup>2</sup> IEEE 802.11g (2.4GHz): 54 Mbps <sup>2</sup> IEEE 802.11n (2.4GHz): 130 Mbps <sup>2</sup> IEEE 802.11a (5GHz): 54 Mbps <sup>2</sup> IEEE 802.11n (5GHz): 270 Mbps <sup>2</sup>		
Quick Mode: OPEN, WPA2-PSK, Advanced Mode: OPEN, WPA/WPA2-PSK, WPA-Enterprise			
<b>Operating Temperature</b>			
0 - 50 °C <32 - 122 °F> (low altitude) 0 - 45 °C <32 - 113 °F> (high altitude)			
<b>Operating Altitude</b>			
0 - 3,048 m (0 - 10,000 ft)			
<b>Direct Power On/Off</b>			
Yes			
<b>Start-Up Period</b>			
Less than 26 seconds, Warm-up period: 30 seconds   Less than 16 seconds, Warm-up period: 30 seconds			
<b>Cool Down Period</b>			
Instant Off or 0 second			
<b>Air Filter</b>			
Maintenance Cycle			
<b>Power Supply Voltage</b>			
100 - 120 V AC, 200 - 240 V AC +/- 10 %, 50/60 Hz			
<b>Power Consumption (200-240V)</b>			
Lamp On (Normal / Eco)	1741W / 1030W	1860W / 1123W	
Standby (Network On / Off)	2W / 0.5W		
<b>Dimension Excluding Feet (D x W x H)</b>			
720 x 620 x 280 mm			
<b>Weight</b>			
Approx. 113.3 lbs. / 51.3 kg   Approx. 109.3 lbs. / 49.6 kg			
<b>Fan Noise (Normal / Eco)</b>			
45 / 38 dB			

<sup>1</sup> Colour brightness (colour light output) and white brightness (white light output) will vary depending on usage conditions. Colour light output measured in accordance with IDMS 15:4; white light output measured in accordance with ISO 21118.  
<sup>2</sup> Maximum speed and range is achievable when used with same enhanced mode technology. Actual data rates, features and performance may vary depending on your computer system, the environment and other factors.  
<sup>3</sup> 20,000H life for laser light source : Approximate time until brightness decreases 50% from first usage. Measured by acceleration test assuming use of 0.04 - 0.20 mg/m<sup>3</sup> of particulate matter. Time varies depending on usage conditions and environments. Replacement of parts other than the light source may be required in a shorter period.

**EPSON**  
 EXCEED YOUR VISION

**Supplied Accessories**

- Power Cable
- Remote Control
- Battery for Remote Control (AA x 2)
- Owner's Manual CD ROM
- Lens Connector Cap\*

**Optional Accessories**

- Air filter: ELPAF58
- Remote Control Cable Set (10m x 2): ELPKC28
- HDBaseT Transmitter: ELPHD01
- Interface board: ELPIF01, ELPIF02, ELPIF03
- Ceiling Mount: ELPMB47, ELPMB48

**Optional Lenses**

- Ultra Short Throw Zoom Lens: ELPLX02
- Zoom Lens: ELPLU03S\*, ELPLU04, ELPLW05\*, ELPLW06, ELPLL08, ELPLW08, ELPLM10, ELPLM11, ELPLM15

\* Only applicable for L12000QNL

EB-L12000QNL



EB-L20000UNL



©2019 Epson Singapore Pte Ltd. All Rights Reserved. Reproduction in part or in whole, without the written permission from Epson, is strictly prohibited.

EPSON and EXCEED YOUR VISION are registered trademarks of Seiko Epson Corporation.

All other product names and other company names used herein are for identification purposes only and are the trademarks or registered trademarks of their respective owners.

Epson disclaims any and all rights in those marks. Projected images shown herein are simulations. The actual product design and contents may vary. Specifications are subject to change without notice and may vary between countries. Please check with local Epson offices for more information.

Apple, iPad and iPhone are trademarks of Apple Inc., registered in the U.S. and other countries. App Store is a service mark of Apple Inc. Android is a trademark of Google Inc.

Dealer's Stamp

Information correct at time of printing.  
 Printed September 2019

Sales Enquiries  
 800 120 5564

For latest specifications, visit [www.epson.com.sg/highbrightness](http://www.epson.com.sg/highbrightness) or call +65 800 120 5564.

**EPSON**  
 EXCEED YOUR VISION

**PROJECTOR WISHES COME TRUE.**

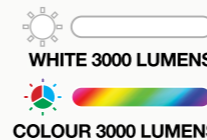
**EPSON 3LCD PROJECTORS**

**1-CHIP PROJECTORS**



Up to **3x** Brighter Colours with Epson Projectors\*

**TRUE BRIGHTNESS**



**NO RAINBOW EFFECT**

**TRUE COMFORT**



**3x WIDER COLOUR GAMUT** Epson Projectors

**TRUE REALISM**



**TRUE COLOURS**

Brighter, vivid projection from Epson.

**9 out of 10 PEOPLE PREFER IMAGES FROM EPSON PROJECTORS**



**IT'S IN THE DETAILS.**

With 3LCD panels, every projection gives you spectacular true colours.



Facebook EpsonSEA Instagram @EpsonSEA Twitter @EpsonSEA YouTube EpsonSoutheastAsia LinkedIn Epson Southeast Asia

Find out more at [www.epson.com.sg/truocolours](http://www.epson.com.sg/truocolours)

\* Leading Epson business and education projectors vs. leading 1-chip DLP® projectors, selected according to NPD data as of July 2015. Based on U.S. research conducted by Radius Research.  
 \*\* These lumen statistic can be found at [www.colorlightoutput.com](http://www.colorlightoutput.com).  
 1 Color brightness (color light output) in brightest mode, measured by a third-party lab in accordance with IDMS 15.4. Color brightness will vary depending on usage conditions. Top-selling Epson 3LCD projectors versus top-selling 1-chip DLP® projectors based on NPD sales data for May 2017 - April 2018.  
 2 Gamut volume in brightest mode, measured by a third-party lab in 3D in the CIE L\*a\*b\* coordinate space. Top-selling Epson 3LCD projectors versus top-selling 1-chip DLP® projectors based on NPD sales data for May 2017 - April 2018.